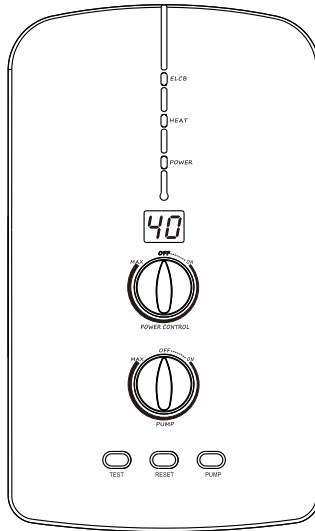




ECOPRO

TANKLESS WATER HEATERS

Instruction Manual



Model: E55

For proper operation and maintenance please read carefully and preserve the instruction manual

WARNING

- 1.The appliance must be earthed.
- 2.The appliance must be permanently connected to fixed wiring.
- 3.If the supply cord is damaged, it must be replaced by the manufacturer, its service agent or similarly qualified persons in order to avoid a hazard.
- 4.Household use only.
- 5.The spray head must be descaled regularly.
- 6.The outlet must not be connected to any tap or fitting other than those specified.
- 7.The appliance is not to be installed in location where freezing can occur.
- 8.The new hose sets supplied with the appliance are to be used and that old hose sets should not be reused.
- 9.Remember to SWITCH OFF at mains before carrying out when install the appliance and maintenance.
- 10.This appliance is not intended for use by persons (including children) with reduced physical, sensory or mental capabilities, or lack of experience and knowledge, unless they have been given supervision or instruction concerning use of the appliance by a person responsible for their safety. Children should be supervised to ensure that they do not play with the appliance.

Description of water heater

(See Fig. 1)

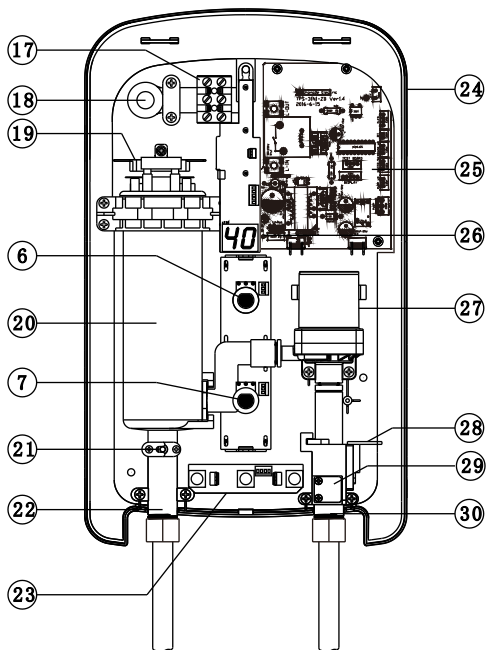
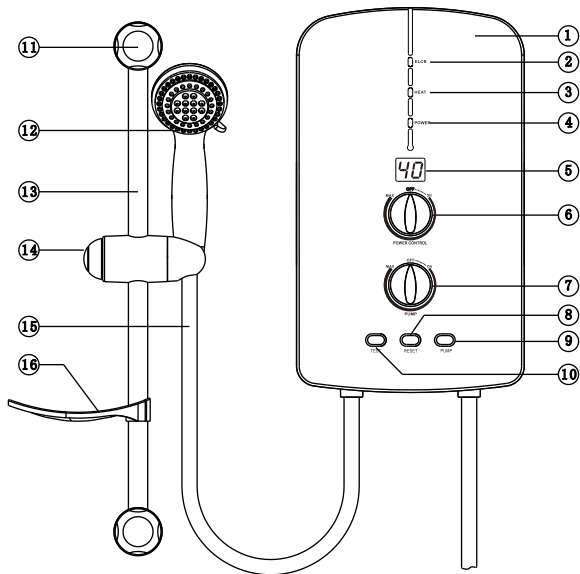
1. Front Cover
2. ELCB Led
3. Heat Led
4. Power Led
5. TEMP Led
6. Power Control knob
7. Pump knob / Temp Control knob ^{(1)/(2)}
8. Reset Button ^{(1) & (2)}
9. Pump Button ⁽¹⁾
10. Test Button ^{(1) & (2)}
11. Rail Support
12. Hand Shower
13. Slider Rail
14. Adjustable Shower Holder
15. Hose
16. Soap Tray
17. Terminal Block
18. Embedded Cable Entry
19. Thermostat(Manual reset)
20. Heater Tank
21. TEMP Sensor
22. Water Outlet Connection
23. Test/Reset/Pump Button
24. Back Case
25. Main PCB Board
26. TEMP PCB Board
27. DC Silent Pump ⁽¹⁾
28. TRIAC
29. Water Flow Switch
30. Water Inlet Connection

(1). For Pump model only

(2). For NO Pump model

Description of water heater

1



Technical data

For technical characteristics, please refer to the appliance data plate

MODEL	WITH PUMP	WITHOUT PUMP
Operating water pressure	0-0.6MPa 0-6bar 0-87psi	0.02-0.6MPa 0.2-6bar 3-87psi
WEIGHT (Without Cable)	1.97kg	1.81kg
DIMENSIONS	340(H)X225(W)X75(D)mm	

WARNING

1.Products manufactured by us are safe provided they are installed, used and maintained in good working order in accordance with our instructions and recommendations. Always refer to this manual if you have any doubt.

2.The appliance must be earthed.

3.If any of the following conditions occur, immediately switch off the mains and contact the sales agent for repair. Never attempt to repair the unit yourself.

- If the Heater begins to make an odd noise, smell or smoke.
- ELCB and Heater lamp does not light up.
- Water temperature can not be controlled.
- If the Heater shows signs of a distinct change in performance.
- If found water leakage from inside.

Installation instructions

CAUTION before installtion:

- 1.Installation must be carried out by a qualified personal and in compliance to the local authority regulations.
- 2.This heater must be permanently connected to the direct main current supply. The use of a plug and socket is not recommended.
- 3.For the correct size of wire conductor corresponding to different electrical loading. Please refer to Table 1.
- 4.This heater operates at a minimum water flow rate of 2.0 L/min. For direct connection to the water tank, the heater must have a minimum of 1.0m below the water tank.
- 5.For without pump model: This heater will not function if there insufficient water flow (min: 2.0L/min) to trigger the flow switch.
- 6.In time of thunder, turn off the electric current breaker in advance to protect the heater.
- 7.The built-in ELCB will automatic cut off the power supply in case there is a current leakage as low as 15mA.
- 8.The thermostat will automatic cut off the power supply if it has sensed an abnormal rise in showering water temperature. Only qualified technicians are allowed reset the thermal cut-out built inside the appliances.

Install the appliance:

- 1.Select a suitable position in the bathroom.
- 2.Remove the screw A-(fig.2a&2b) at the bottom of the unit and lift up the front cover first at the bottom and then unhook the two parts. Be careful not to break the two hook which locate at the top of the front cover.
- 3.Mark the screws points of the heater base on the wall. The heater position should be 1.5 meter from the bathroom floor.
- 4.If shower accessory is available(refer fig.2c), mark 2 screws points for positioning the slider rail set beside the heater. It is recommended the top of the portion is in level with the top of the heater.
- 5.Use 6mm diameter drill and make the wall plug holes for heater and shower accessory to 35mm depth.
- 6.Insert the wall plugs and mount the heater firmly in position with the screws provided.
- 7.To mount shower accessory, remove the terminal cover from the mounting terminal and screw the mounting to position. Close the cover, insert the shower holder and soap tray into the slider rail. Mount the slider rail to the mounting terminal and screw the second mounting to position. Close the cover.

Water connection

(For model Single-Point)

1. Connect the valve to the water inlet with rubber washer. Use correct tools to tighten and be careful not to break the plastic nut.
2. Insert mesh filter washer then connect the incoming water piping the stop valve (1/2" BSP).
3. Connect the hose and hand shower to the outlet of the heater sure to put in the rubber washer.
4. Hook the hand shower to the slider rail shower holder and adjust to ideal position.

Important: The water outlet can only be fitted to the hose hand shower set provided. No control valve or fitting can be fitted to the water outlet.

Testing connection

1. The water inlet and outlet must be installed correctly, otherwise the heater cannot function.
2. Do not use plumbing cement on connection. If necessary, use only thread or sealing tape.
3. Turn on the water mains to drain out all plumbing dirt and to fill up the heater tank check for any water leakage. (Important: this step will prevent damage to the heating element).

Electrical connection

IMPORTANT WARNING:

- This appliance must be EARTHED.
- Remember to SWITCH OFF at mains before carrying out any electrical work.
- Refer to the TABLE 1 for the correct cable size.

This product is equipped with a SINGLE POLE ELCB, which in case of mishap will protect the user from leakage current ONLY if the Line and Neutral cable have been connected correctly.

(NOT INVERTED)

1. Use double coated flexible cable having nominal cross-sectional area between 2.5 and 4 mm²
2. Lead the power cable from the circuit breaker to a "ON/OFF" double bipolar switch (which having a contact opening at least 3mm in all poles) outside the bathroom, then lead a cable connected to terminal block inside the unit. (fig. 3a)
3. Insert the cable through core hitch 'A' for side entry or hole 'B' below the Back base for wall embedded cable (fig. 3b).
4. Connect the cable to Terminal Block and fully tighten them as follow:

BROWN or RED for LIVE (L)
 BLUE or BLACK for NEUTRAL (N)
 GREEN or Green/Yellow for EARTH (⊕)

5. Check the Wiring connection is tight and correct then close the Front Cover.

When close back the Front Cover, please take note the below procedure:

-To ensure the correct position, turn the Power Control VR and Pump Speed VR Insert to OFF position as shown in fig. 4a. (At the Heater Base)

-To install the Front Cover, turn the Power Control knob and Pump Knob to OFF position to align with the VR Knob insert as shown in fig. 4b. (At the Front Cover)

**For Without Pump models, the same align procedure is apply to both Water flow valve Insert and Temperature Control Knob.

6. Fix back the screw A.

Starting and testing

IMPORTANT WARNING:

The heater tank must be filled up with water before turn on the electricity supply. This is to prevent any dry burnt damage to the heating element.

1. Turn on the water supply and stop Valve, then wait until the water flow through the Hand Shower.
2. Switch on the electrical supply.
3. Turn the Power Control Knob to ON, the Temperature LED, Green LED (POWER) lamp and the Red LED (HEATER) lamp will turn on, the hot water will come out in a few seconds. The higher the Power indicator position, the hotter is the shower.
4. The shower might not be hot enough even at the MAX position if the incoming water supply from the mains is too cold or the flow is too high. In this case, you can adjust the water inflow in order to get the desired showering temperature.
5. Check the Built-in ELCB as follow:
 - Press the "TEST" Button, the unit should trip and cut off the power supply, the Yellow LED (ELCB) lamp should light on.
 - Press the RESET Button, the unit should resume normal function, Green LED lamp should light on.If the above mentioned procedure prevail, the ELCB is functioning in normal condition.
6. If Shower accessory is available, the height and the direction of the Shower Holder is adjustable. By pressing the release button and slide the Shower Holder to the desired position. Move the Hand shower to the desired angle. A ratchet mechanism in the Shower Holder will hold the Hand shower in the selected position. (fig.5)
7. It is not necessary to turn the Power Control Knob to OFF position when the Heater is not in use.
8. SWITCH OFF the electrical power supply after shower.

FOR PUMP MODEL :

9. Turn on the Pump Speed Control Knob to test run the pump. If the shower is not hot enough, you can adjust the Knob to reduce the pump speed until you get the desired shower temperature.

MAINTENANCE

Read the section WARNING first

Test the "ELCB" regularly

(For ELCB models only) (fig.6) (This procedure is highly recommended.)

Turn on the electricity supply, If the Power Control Knob is in ON position, the Green Power lamp will light up; Turn on the water supply, the Red HEATER lamp will light up also. Press the ELCB Test Knob, the POWER and HEATER lamp should go off, the Yellow LED(ELCB) lamp should light on. Press the Reset Knob to resume the electricity supply. If the POWER or HEATER lamp does not go off when you press the ELCB Test Knob, SWITCH OFF the mains supply and contact your sales agent for repair. Special skill is required for repair. NEVER try to repair the unit by yourself.

Cleaning precaution

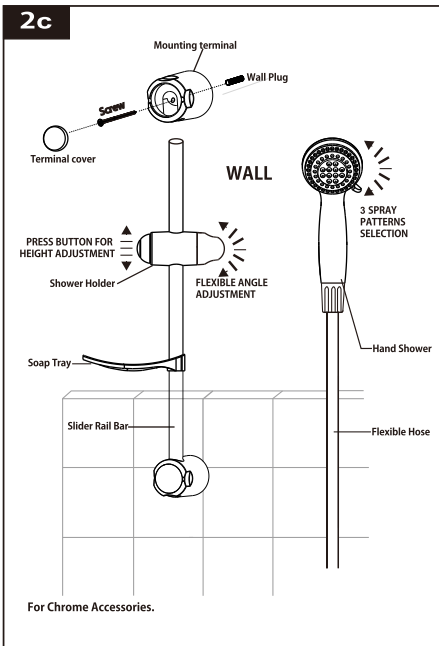
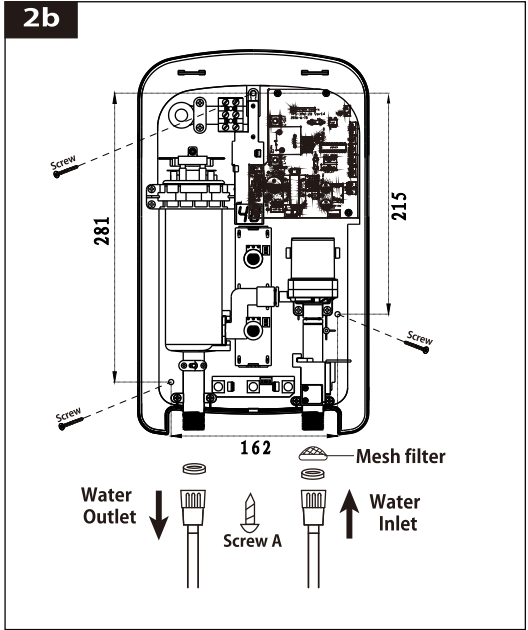
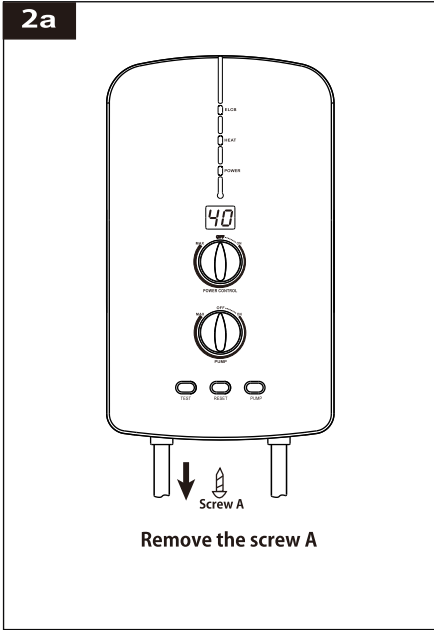
Do not use thinner, alcohol, petrol or any other organic solutions to clean the set, use only a damp cloth with mild detergent.

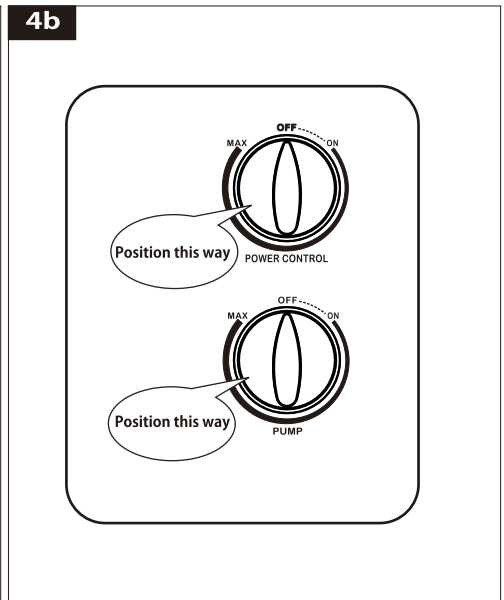
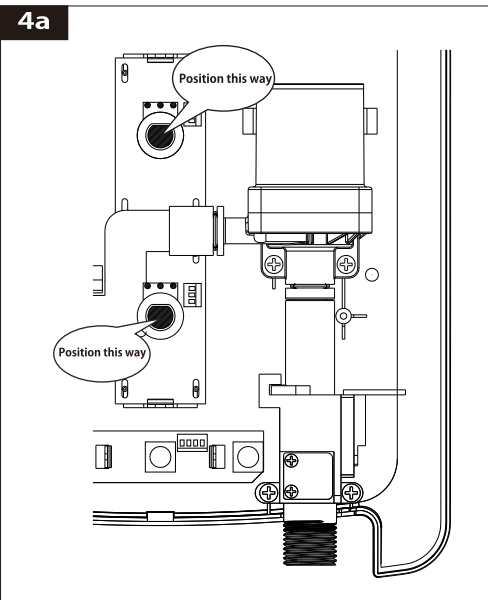
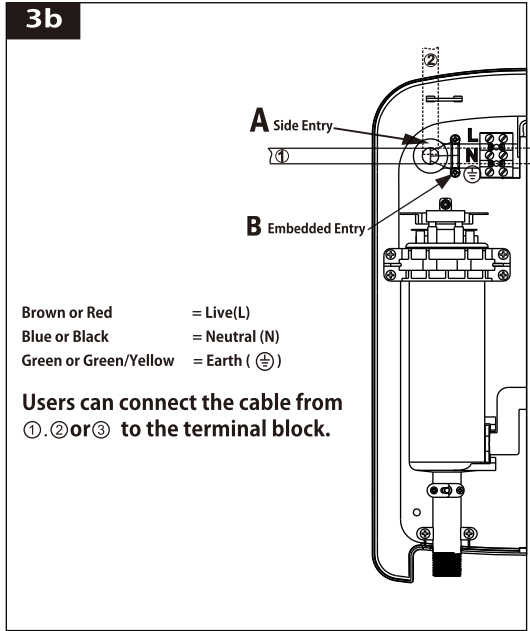
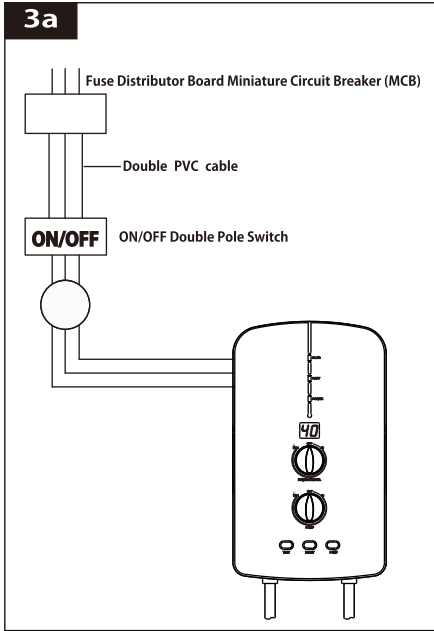
Clean the filter regularly

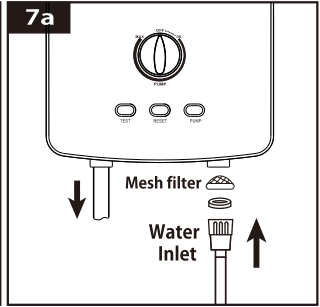
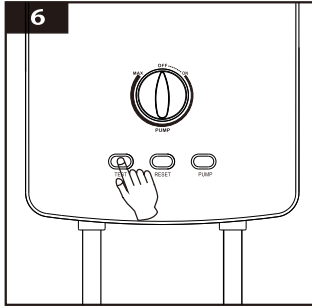
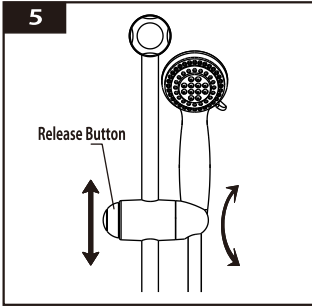
Clean the Mesh Filter regularly to prevent blockage, the built-in Filter as shown in fig. 7a.

Note : The specification, actual product's cosmetic design and accessories parts shown are correct at the time of printing and may be subjected to change without prior notice.

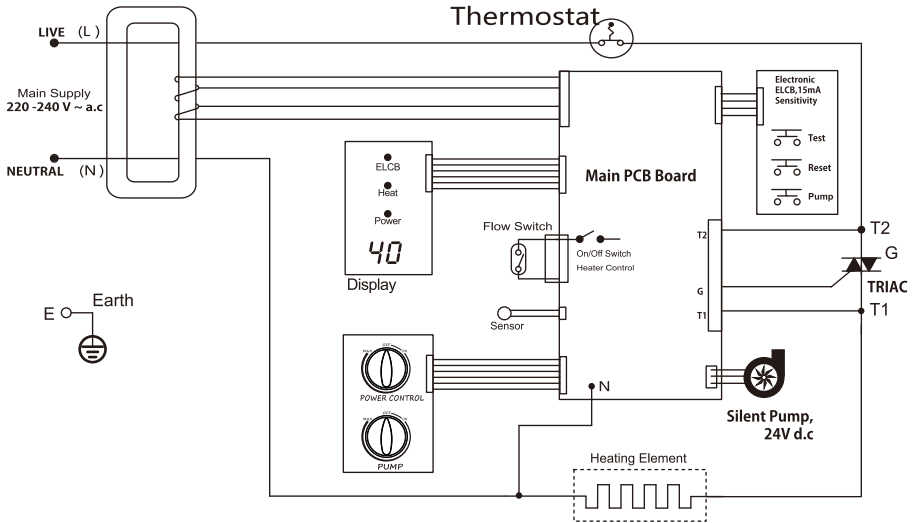
Shower Accessories parts are optional for Multi-Pointing Models.







WIRING DIAGRAM - SILENT PUMP FOR SINGLE POINT MODEL



WIRING DIAGRAM - NO PUMP FOR SINGLE POINT MODEL

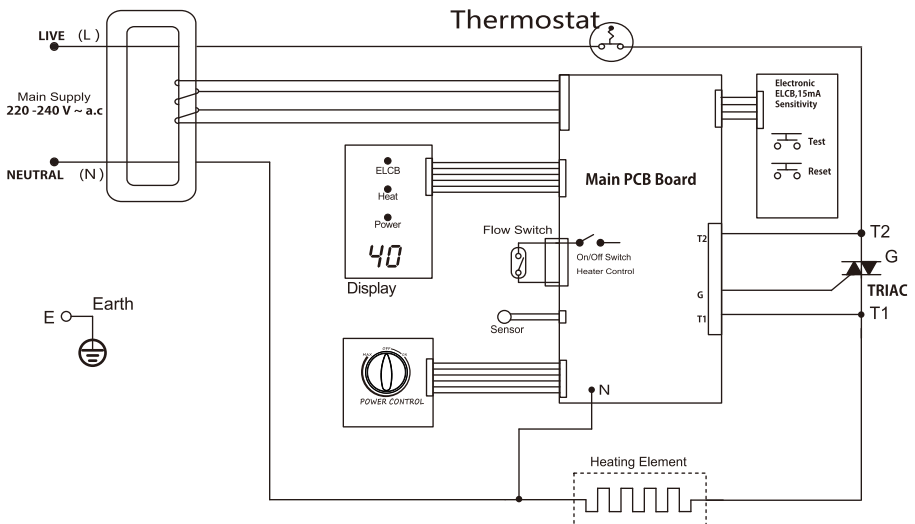


TABLE 1-ELECTRICAL LOADING TABLE

Voltage (AC)	Power (kW)	Current (A)	Conductor Size (csa)			On/Off Switch (A)	Fuse / MCB (A)
			mm ²	Conduit Cable	Flexible Cable		
240V~ 50/60 Hz	3.3	13.8	2.5	7 / 0.67 mm	50 / 0.25 mm	20	16
	3.6	15.0	2.5	7 / 0.67 mm	50 / 0.25 mm	20	20
	4.0	16.7	2.5	7 / 0.67 mm	50 / 0.25 mm	32	20
	5.0	20.8	4.0	7 / 0.85 mm	56 / 0.30 mm	32	32
230V~ 50/60 Hz	3.0	13.0	2.5	7 / 0.67 mm	50 / 0.25 mm	20	16
	3.3	14.3	2.5	7 / 0.67 mm	50 / 0.25 mm	20	16
	4.0	17.4	2.5	7 / 0.67 mm	50 / 0.25 mm	32	20
	5.0	21.8	4.0	7 / 0.85 mm	56 / 0.30 mm	32	32
220V~ 50/60 Hz	2.4	10.9	2.5	7 / 0.67 mm	50 / 0.25 mm	20	16
	3.5	15.9	2.5	7 / 0.67 mm	50 / 0.25 mm	20	20
	4.5	20.5	2.5	7 / 0.67 mm	50 / 0.25 mm	32	32
	5.5	25.0	4.0	7 / 0.67 mm	56 / 0.30 mm	32	32



ECOPRO

TANKLESS WATER HEATERS

ECOPRO

55 W 116TH ST

SUITE 116

New York NY 10026

TEL +1 646 825 1276

ECOPRONY@GMAIL.COM

This product must not be disposed together with the domestic waste. This product has to be disposed at authorized place for recycling of electrical and electronic appliances.

By collecting and recycling waste, you help save natural resources, and make sure the product is disposed in an environmental friendly and healthy way.

Remarks: The specifications may change without prior notice. All features and specifications are all given by manufacturer.